

VOLUME 1



DEMOGRAPHIC STUDY + COMMUNITY SURVEY

Jefferson High School District #1 Demographic & Community Study

312 S. Main St., Boulder, Montana 59632

June 2019

SMA | ARCHITECTS

Helena | Bozeman
www.architects-sma.com
SMA Project # 1917

**Scan the QR code below to access an
electronic version of this report.**





ABOUT JEFFERSON HIGH SCHOOL

Jefferson High School District #1 encompasses a geographic area of approximately 1100 square miles situated in the northern half of Jefferson County in southwestern Montana. The district high school is located in the City of Boulder, the County Seat of Jefferson County, and draws students from Basin, Clancy, Jefferson City and Montana City in addition to Boulder. Easy access is available to the larger cities of Helena, Butte and Bozeman. The high school currently serves an average of 280 students grades 9-12. The school has a rich history having once been the county high school, serving high school students throughout Jefferson County.

The school's theater program has received national recognition and performs 4-5 productions each year.

There is a comprehensive Career and Technical Education program for students with classes in Culinary Arts, Welding, Woods, Small Engines, Drafting, CADD, Child Development, Web Design, Computer Applications, Small Business Development, Keyboarding and more. Students participate in Vocational Student Organizations. The Skills USA program has had students qualify for nationals for the last sixteen years.

Students are able to take con-current enrollment classes in Literature, Biology, Spanish and Welding, earning both high school and college credit. A comprehensive extra-curricular program is provided to students. Athletics include: cross country, football, volleyball, basketball, wrestling, track and girls tennis.

Other opportunities are: Rodeo Club, Model United Nations, Youth and Legislature, Yearbook, Journalism, Business Professionals of America, FCCLA, and Art Club.

Approximately 48% of the graduates pursue post-secondary education. For more information: Contact the high school office at 225-3317.

page left blank intentionally

Owner

Jefferson High School District # 1

Tim Norbeck, Superintendent

312 South Main Street

Boulder, MT 59632

406.225.3317

Architect

SMA Architects

920 Front Street - Suite 101

Helena, MT 59601

406.442.4933

www.architects-sma.com

Acknowledgements

SMA Architects thanks Superintendent Tim Norbeck, the Jefferson School District # 1 Board of Trustees, Jefferson High School's faculty and staff and the residents of the District for their assistance, patience and accommodation during the preparation of this document.

page left blank intentionally

Table of Contents

Volume 1

1	Introduction.....	9
	Geography.....	10
	Purpose Statement / Preface.....	11
	Introduction / Background.....	11
	Design Team.....	12
	Process Schedule.....	13
	Executive Summary.....	14
	Recommendations.....	18
2	Demographic Study.....	19
	Demographics.....	21
	Economics.....	21
	Housing.....	26
	Enrollment.....	28
	Current Enrollment.....	28
	Projected Enrollment.....	29
	Students Leaving District.....	29
3	Staff Questionnaire.....	33
	Staff Questionnaire Findings.....	34
4	Community Survey & Community Meetings.....	35
	Community Survey.....	37
	Student Surveys.....	41
	Community Meetings.....	43

Volume 2

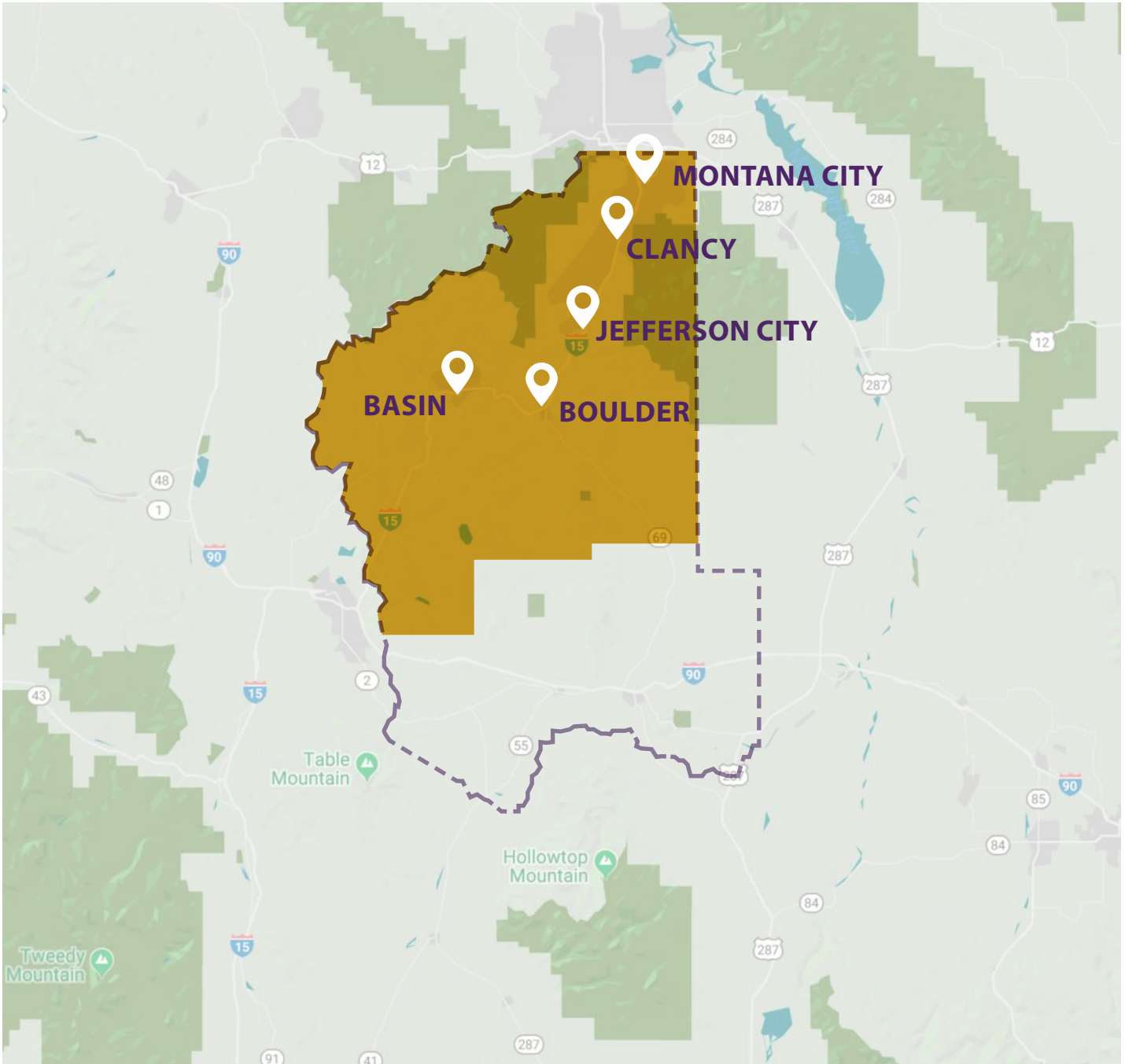
A	Appendix A: Community Survey Results
----------	---

page left blank intentionally



- Geography**
- Purpose Statement / Preface**
- Introduction**
- Background**
- Schedule**
- Design Team**
- Executive Summary**

Jefferson High School District #1 Geography



JEFFERSON COUNTY LINE



JEFFERSON HIGH SCHOOL DISTRICT #1

Purpose Statement / Preface

The following document summarizes the findings of the Design Team and Ownership Team, which consists of SMA Architects and Jefferson High School District #1 (District), regarding the demographics and public outreach study of Jefferson High School. As further outlined in this report, The District and Design Team conducted a public outreach analysis of the District's population through a series of three public meetings as well as a community survey which could be completed electronically or via traditional hard-copy. In conjunction with the public surveys, the Design Team facilitated outreach to the existing Jefferson High School faculty.

Demographics information was obtained by researching available data concerning the demographics of Jefferson High School District #1's, as well as historic attendance records, as provided by the District.

This report is intended to provide a synopsis of the data gathered throughout the public meetings, public and staff surveys and research regarding demographics of Jefferson High School #1. SMA Architects has approached this report as an independent party and without preconceived notions of the potential outcome or conclusions. At no time during the research portion or writing of this report, was SMA Architects influenced, or requested, to draw certain conclusions or to modify any of the data by a District employee or Trustee member.

The findings and recommendations in this Report are based upon research of data available to the Design Team, at the time of this report, in addition to the public outreach and data gathering facilitated by the Design Team. There may be data and scenarios unknown to the Team during this process, and this report does not attempt to speculate or address any potential issues that are unknown at this time.

Introduction/ Background

Jefferson High School District #1 (District), arguably one of the most unique High School Districts in the State of Montana, has began a community conversation regarding how the District should be planning to serve their students for the next several decades. Due to the uniqueness of the District, the answer is as complex as the topography that makes up the District's boundaries.

Beginning in March, 2019, the Board of Trustees (Trustees) engaged SMA Architects to assist them as a neutral facilitator to begin research and public outreach to better understand the challenges and potential opportunities available to the District. Specifically, the District engaged SMA Architects to accomplish the following three tasks:

- Conduct existing faculty outreach to gauge faculty interest in potential future physical plant improvements in the District as well as to gain an understanding of opinions of existing District facilities.
- Facilitate community outreach to gauge the public's interest in potential future physical plant improvements in the District as well as gain an understanding of the public's opinion regarding existing District facilities and District 'direction'.
- Conduct demographics research to better understand past and potential future growth in the District and how that may affect future facility planning.

Faculty Outreach

In conjunction with the District, SMA Architects developed a Staff Questionnaire that was distributed to Jefferson High School's staff. The questionnaire focused on many facets of the District, including existing facility challenges and opportunities to District-wide challenges and opportunities. A summation of these questionnaires is included in this report, in addition to the specific survey responses received.

In addition to the JHS's staff, students were also invited to participate in the survey and were presented with the same questions as staff. A summation of these questionnaires is included in this report, in addition to the specific survey responses received.

Public Outreach

The public outreach process was multi-faceted consisting of public meetings, electronic surveys and traditional paper-copy surveys to gather public input regarding the District's future. SMA Architects facilitated three public meetings throughout the District. These meetings took

place at Montana City School (May 6, 2019), located in Montana City, Clancy Elementary School (May 7, 2019), located in Clancy and Jefferson High School (May 13, 2019), located in Boulder. The locations of the meetings was intentionally chosen, not only as a convenience to the public attendees, but also in an attempt to receive a diverse 'cross section' of opinions, that can vary by geographic location within the District.

The meetings were conducted in an open forum, with the public invited to voice opinions freely to all in attendance, including the Superintendent and Board of Trustee members. The purpose of the public meetings was for the Design Team and District to listen and gather information and opinions from the public as well as answer questions, as appropriate and as the District and Design Team were able to answer. There weren't any pre-conceived notions or ideas presented from the Design Team or District in these meetings. SMA Architects posed the same six questions to public attendees at each meetings. The public's input and opinions were then documented by the Design Team. Generally, the six questions focused on the following six core areas of the study:

- District Challenges
- District Geography
- District Future
- Impression of existing Jefferson High School Building
- In-District Student Retention
- District Growth Projections

The summation of these public meetings is included in this report, in addition to the specific responses received at each public meeting.

Due to meeting times and dates, it was recognized that a portion of the District's residents would be unable to attend the public meetings. To gain as much public input as possible, SMA Architects also hosted a web-based and 'hard copy' survey throughout the District that asked the same questions posed at the public meetings. Students of Jefferson High School also participated in the survey. This survey was hosted for a period of four weeks and a total of 309 survey community responses were received, and 39 from students.

The summation of the survey responses is included in this report, in addition to the specific responses received at each public meeting.

Demographics Study

SMA Utilized a variety of sources for the Demographic Study portion of our report. Several sources that were especially fruitful were the Tri-County Housing Needs Assessment from September 2018, Census Information and meeting with Jefferson County Planner/ Permit Technician, LaDana Hintz.

Project Study Team

Throughout the public outreach and investigative process, SMA Architects consulted with the Jefferson High School Superintendent, Board of Trustees, High School Faculty and Jefferson High School District #1 community members. ■

Process Schedule

Community Survey Meetings

**May 6
6 pm**

MONTANA CITY RESIDENTS: Montana City School, 11 McClellan Creek Rd., Montana City

**May 7
6 pm**

CLANCY + JEFFERSON CITY RESIDENTS: Clancy School, 18 Clancy Creek Rd., Clancy

**May 13
6:30 pm**

BOULDER + BASIN RESIDENTS: Jefferson High School, 312 S. Main Street, Boulder

Staff Questionnaire

- April 2, 2019 - May 6, 2019

Community Survey (Online & Paper Surveys)

Hosted by SurveyMonkey.com

- April 22, 2019 - May 21, 2019 = 4 weeks total

Demographic Studies

- May 21, 2019 - June 30, 2019

Report Compilation

- May 21, 2019 - July 16, 2019

Draft Report Presentation

- July 16, 2019

Executive Summary

Upon completion of the data gathering portion of this report, SMA Architects reviewed information from staff and student surveys, community surveys, community public meetings, and demographics of Jefferson County.

Community Meetings

The three community meetings held in May 2019 were conducted in Montana City, Clancy and Boulder. These meetings were well attended and included Jefferson High School Board of Trustees, Superintendent Tim Norbeck, residents of the District, parents, students and staff. The questions included in the community survey were also posed at these meetings.

The first meeting in Montana City included a great deal of discussion about the location of Jefferson High School, perceived hazard of traveling over Boulder Hill, and general concern over the time students spend traveling to and from Boulder. Attendees discussed school offerings, and the ability for students to play more than one sport at Jefferson High School. Many parents expressed that the District and community, as a whole, could improve communication regarding course offerings and opportunities for incoming students. In addition to these comments, there were a number of strong comments regarding the fact that most of the population lives in the northern end of the District, and if we are to put money into a school, it should be in the area of the District with the most population.

The second meeting in Clancy served the Clancy and Jefferson City communities. Also well-attended, the public commented on the District's communication of course offerings and student successes. A request was made that the District utilize mainstream media, such as the Helena Independent Record to reach residents. Many believe the District's facilities to be outdated and are overutilized. The public spoke highly of quality of education, student to teacher ratio, and the school size. Attendees also commented on the geography and concern over the security of the modular buildings.

The last meeting in Boulder served the Boulder and Basin communities. There was discussion around the perception and reputation of Boulder and Jefferson High School's academic and athletic opportunities.

Many have a great deal of pride for the community and small-town feel of the school. Comments included liking the four day school week, the technology available to students, and the small class size. Some commented that modifications to the current school are necessary, especially with new schools being built elsewhere, but need to verify the population growth projections to validate building.

Community Survey Data

Community survey input was compiled to quantify the number of most heavily cited responses. Of that data, the most heavily cited challenge for Jefferson High School District was the District's geography. In particular, the geographic location of the High School building, located in Boulder, MT, in relation to the greatest District population and rest of the county. Those comments included the 'Boulder Hill', located on Interstate 15 between Boulder and Jefferson City. Geography was also noted at the Community Meetings to be of benefit, in that some students and families enjoy the 'small-town feel' and living in a less densely populated District. Alternatively, that same geography was considered to limit the real or perceived potential available to students if they wish to attend Jefferson High School.

Many survey respondents believe that building a High School in the northern part of Jefferson County is the solution to the geography of the District, due to convenience, distances traveled, and where the population lives. Many survey respondents have concern over East Helena High School and Helena High School potentially closing the District to out-of-district students, possibly causing Jefferson High School to become overcrowded. Many believe that the building and site at Jefferson High School are in need of updates and improvements both inside and out, while a fewer majority believe the condition of the school is kept up well.

- Some people think that the student body is growing while others believe it is declining.
- Some like the small town setting while others feel it is a problem.
- Some feel the school is diverse while others feel it needs to become more diverse
- Some feel as if JHS is a larger class B school and is growing, while others feel as if it is declining and will soon possibly be a class C school.

- There appears to be a large rift between the North and South ends of the County, this seems to stem from a multitude of items, such as geography, socioeconomic status, job locations, and generally deciding on issues.
- There were quite a few people who were concerned about the impact that EHHS would have on the 59.2% growth rate projection – and were hesitant to make any conclusions until sometime had gone by with that school in place.
- There also appears to be the sense that teachers at the primary level in the district encourage their students to go to HHS and not JHS
- A lot of doubt about the projection listed in Q8, regarding population growth (that it's too high or inaccurate)
- A lot of comments received regarding Boulder Hill being dangerous
- Several people think that HHS representatives (counselors, coaches) should no longer be allowed to recruit in the county

Potential Courses of Action:

- Better communication, use of an e-mail or text system to keep parents informed of changing and current plans. Possibly send out a weekly or monthly newsletter of the events and activities the school is involved in.
- Advertise and promote Jefferson High School heavily, especially in the northern part of the District. Need educate people why JHS is a good place for students to go and help people realize what JHS offers.
- Possibly update facilities, such as the track, removing modular buildings, safety and security updates, etc. allowing for JHS to host more events, be a safer school and provide proper educational spaces inside of the main building.

Demographic Data

Our studies show that population has increased in Jefferson County as a whole, especially in the areas of Montana City, Jefferson City and Clancy since 2000. Boulder's net population has decreased over that same period.

Upon review of the availability of existing and added housing, and the overall incomes and demographics of county residents, several themes have emerged. Notably, housing needs in the District are outpacing

supply, aside from the addition of several small subdivisions in the Jefferson City area.¹ We believe this may cause population growth to eventually slow, unless large portions of existing undeveloped land become developed.

Additionally, 60.3% of county residents currently work outside of the County, primarily in Lewis and Clark County where the majority of government occupations are housed.² Due to the geographic location and distance of Jefferson High School from a large majority of the existing population, it is our opinion many students and parents will continue to choose to go out-of-district to school. The primary contributors are perceived danger of Boulder Hill, convenience, with parents already working in Helena, and also availability of educational and extracurricular opportunity. It was noted throughout the community meetings, in addition to convenience, that parents and community members perceived Jefferson High School as having less opportunity, both academically and extracurricular, largely influencing their decision for students to go out-of-district.

While long-term population is difficult to predict, many factors, including the availability of housing lead us to believe that population and enrollment at Jefferson High School may slowly grow as evidenced over the past nine years, followed by it plateauing. At this time, we do not believe the District will see a large influx of enrollment, if all current enrollment influencing factors remain the same.

Staff Questionnaire

As part of our work with Jefferson High School District #1, SMA conducted a questionnaire of the school's staff. Of the sixteen respondents, there were mixed reviews about certain areas of the school's building, programs and geography, while there was consensus on many areas. The full surveys are located in Appendix A for reference with a full summary in Section 3.

Survey respondents reported many positive assets for Jefferson High School. Of those, the small town feel, and personalized, one-on-one education is a great asset to the students. Teachers get to know students, and are able to offer very personalized education. The students and staff of the school are part of the community of Boulder, proving to be of great pride of the staff. The community enjoys many of the great programs the

¹ Tri-County Housing Needs Assessment, 2019

² Montana Dept. of Labor & Industry, <http://lmi.mt.gov/Local-Area-Profiles> & U.S. Census Bureau, American Community Survey, 2012-2016 (Table B08130)

school provides, of those being theater and athletics. The staff reported that the school is kept clean, but is in need of general upgrades due to it being outdated. Other positive aspects of the school include having two gyms, a nice library, outdoor classrooms, and CTE programs. Staff believe the activity bus is an asset to the students, as well as the four-day school week. Staff also reported that they believe the school is safe and secure largely due to the nature of the community and its surroundings, however could benefit from having one point of entry.

Staff also reported on areas where the school could use improvements, both in programming and condition or limitations of the building. Storage appears to be a common complaint, as well as the general size and availability of equipment in the Science classrooms. Overall general classroom size and number of classrooms available seems to be considered adequate by staff currently, however the modular classrooms demonstrate that the physical building can not comfortably accommodate additional enrollment.

Conclusion

The Jefferson High School District, is one of the most unique School Districts in the state of Montana, both in geography and diversity of its residents. It was immediately clear to the Design Team, there are many opinions regarding the District's current and future direction. The people of the District are passionate about their opinions, and unfortunately these opinions often conflict with one another and often correlate to their place of residence. It was easily observed how opinions in the District change from the north end of the District to the South end of the District.

Generally speaking, we found the north end residents are less 'loyal' to Jefferson High School. They do not feel as close a connection to the school and more identify with the Helena School District and the City of Helena. It is reasonable to conclude these residents feel this way due to their close proximity to the City of Helena and the fact the majority of them work within Helena. In addition, there are a fair number of residents that are alumni of the Helena School system and therefore, will always have a sense of pride and, perhaps, loyalty to the District they grew up in and attended. There were, of course, exceptions to this, with some residents showing as much 'loyalty' and passion regarding Jefferson High School as we witnessed in the southern communities.

While this group was open and honest about how they feel Jefferson High School has a great school, they were very frank that they see two major challenges with their kids attending Jefferson High School, the distance to Boulder and the fact they have to travel over Boulder Hill. These points were often disputed by current and past alumni and parents, however, it is our opinion, that the District will likely never convince a young family that their children will be safe traveling over Boulder Hill. Although it hasn't been an issue for many families over the years, it will be very challenging to convince a young mother and father otherwise, that is 'human nature'. In addition, they do raise an intriguing point which is challenging to dispute: the fact they work in Helena and it will always be less of a challenge to attend extracurricular activities of their students, if they are in Helena, rather than in Boulder.

The 'mid-District communities,' were slightly more split regarding 'loyalty' to Jefferson High School. Many held the school and programs in high regard, without question that their students would attend JHS, or that all students should attend JHS. It is reasonable to conclude this feeling may be largely influenced by the fact these communities lie between Boulder and Helena, and actually live slightly closer to JHS than Helena High School. In addition, many of the residents of these communities are alumni of Jefferson High School, or had children that attended the school. This portion of the District, while voicing some concern regarding travel over Boulder Hill, it wasn't as pronounced of an opinion. Again, this could be somewhat attributable to their proximity to Boulder Hill and the perception that Boulder is closer and they have been sending kids over Boulder Hill for many generations.

Lastly, the 'southern-communities' were very loyal to Jefferson High School and voiced many sound reasons why they feel the school and its programs are 'second to none' in Montana. Again, it is reasonable to conclude this feeling is influenced by proximity to Jefferson High School and the fact they live in the same community as the school, with many of the residents being alumni of Jefferson High School. While some discussion regarding travel over Boulder Hill took place, it was much less pronounced in this group and rather the discussion focused more on the fact it wasn't a hazard to travel over the hill. Again, this is a difficult perception to dispute, given the fact many of these residents commute over Boulder Hill on a regular basis.

The biggest challenge we foresee for the District, may not be whether they should or should not begin to plan for new facilities, it is how they work to unite the District's residents and build consensus among them. As further articulated in this report, in our opinion, we do not foresee a large influx of students entering into the District in the near future, if all current enrollment influences remain 'neutral'. There are, of course, enrollment influences that could rapidly increase enrollment in the District. These influences include, better recruiting efforts by the District, large areas of undeveloped land becoming developed rapidly, and if the Helena School District ever decided to suddenly close enrollment to out-of-District students.

If the District were to venture into the possibility of building a second high school on the north end of the county, a potential challenge they may face is finding a suitable piece of property that could provide adequate size and type to accommodate such a building. While the scope of this report did not include investigation of a possible site, it is not immediately apparent to the Design Team, where such a site may be within the District. There was discussion in the public meetings regarding the pursuit of State School Trust Land in the 1990's and, at the time, this seemed like a possibility. Other than agricultural land being developed, this may be the best option for a potential site in the future. The logical next step to determine possible land purchase, would be to conduct a building program exercise to determine the expected size of the building and therefore, needed acreage.

At this preliminary stage of the process, we feel the District is presented with four possible scenarios and options, they are as follows:

1. Do nothing, keep the existing facilities as they are
2. Consider updating the existing building to bring it to current 21st Century Learning standards and current Safety and Security Standards
3. Consider building a secondary high school on the north end of the District, while also updating the existing Jefferson High School facilities.
4. Consider building a new high school on the north end of the District and discontinue use of the existing Jefferson High School Building.

The 'Do Nothing' scenario is likely the least challenging scenario and will likely result in few changes with in the District. It is possible you could eventually see decrease in

enrollment, due to the age of the building, if other options exist for your students. If the Helena School District were to build new High School buildings or otherwise upgrade their facilities, this could present a further challenge of recruitment for Jefferson High's students. In addition, at this time, it is unclear whether East Helena High School will allow for out-of-district student enrollment, but if so, they could pose a potential enrollment challenge because they may attract those students that wish for a smaller school environment, but they are also interested in the new school spaces and what they can offer for their education and extracurricular opportunities.

Updating the existing building to current 21st Century Learning Standards and current Safety and Security Standards will likely result in 'minimum' political challenge. Those that support the District and Jefferson High will likely support this scenario, in addition to those that may be ambivalent to the scenarios, as a whole. These residents would include those that don't have an affiliation to either the Helena School District or the Jefferson High School District, because they recently moved to the District, post-retirement, or they no longer have school-aged kids, etc. In today's age, most people will support education and, more specifically, safety and security within the schools of their community, whether they have school-aged children, or not. Some resistance to this scenario may come from the residents that are strongly affiliated with the Helena School District and feel strongly that money spent on Jefferson High School Facilities should be spent in the area of the largest District population.

Consideration of building a secondary high school on the north end of the District, while also updating the existing Jefferson High School Facility will likely be met with 'moderate' political challenge. While this seems, at face-value', to accommodate both interest groups within the District, it does come with challenges. First, this could be a costly option, dependent on the magnitude of contemplated renovations to the existing building along with the cost to buy land and build a new school. In addition, the District would conceivably see larger operational costs to operate two schools. Lastly, Jefferson High School would likely see a significant loss of students at the existing school, as the majority of students that currently attend the school would likely attend the new school on the north end.

Consideration of building a new school on the north

end of the District and discontinue use of the existing Jefferson High School Building will likely be met with 'extreme' political challenge. The District would likely see opposition from current 'loyal' supporters as well as those in the community that will have the opinion that, 'we already have a school, why close it and build a new one when we could just fix-up the old school?'. The majority of support for this option would likely come from the residents located on the north end of the District, with some support from the 'mid-District communities'. This scenario would likely be met with strong opposition from your loyal District residents and the town and citizens of Boulder. In addition, this would saddle the District with a vacant building that may be difficult to dispose of.

Recommendations

The following recommendations come from careful consideration of the information gathered during this study, coupled with our team's experience working with Districts and communities across Montana. They are recommendations that the District can debate and choose to implement as they see fit.

1. Develop and implement a better recruitment plan within the 'feeder schools'. This recruitment should start early in the student's education.
2. Develop a better public outreach plan to educate the residents of the District what educational course and extracurricular activities the District offers.
3. Conduct a study of the existing building to determine what capacity, per 21st Century Learning Environment Standards, the school can accommodate. This may become critical, if for some reason, the Helena School District ever closes out-of-district enrollment.
4. Conduct a building condition assessment of the existing Jefferson High School Building to determine current educational and physical plant challenges. This study will help to inform the District what challenges they currently face and potential scope of work and costs to ensure the building remains viable into the future.
5. Conduct a study of the existing building to determine what Safety and Security challenges exist in the building. *From our observations while attending meetings, there are a number of Safety and Security risks that do not meet today's standards.
6. Conduct a programming study to determine the size requirements of a second school. This information can be used to generalize potential building costs and needed acreage for the school.
7. Conduct a study to determine if there is developable land on the north end of the District.
8. Items 3, 4, 5, 6 and 7 above will provide information for the District to continue public outreach and provide the public with 'real-world' scenarios to better inform their opinions.
9. Continue public outreach to determine public's opinion regarding future possible facility improvements or additions. ■



Demographic Study

Demographic Study

The purpose of the Demographic Study completed for Jefferson High School District #1 is to gain an understanding of the geographic, population and economic factors that may influence the District's enrollment and long-term decisions regarding expanded or new educational facilities. The following study investigates the following factors contributing to Jefferson High School District #1's student body, including:

- The number of students that could result from current and future assessments of economics and housing in Jefferson County.
- The number of students that should be anticipated and planned for in the near and long-term future as forecasted by statistical methodologies.



Economics

- Referencing the Tri-County Housing Needs Assessment for Broadwater, Jefferson and Lewis and Clark Counties completed in 2018, the following findings may influence enrollment in the District.

Housing Demand is Outpacing Supply

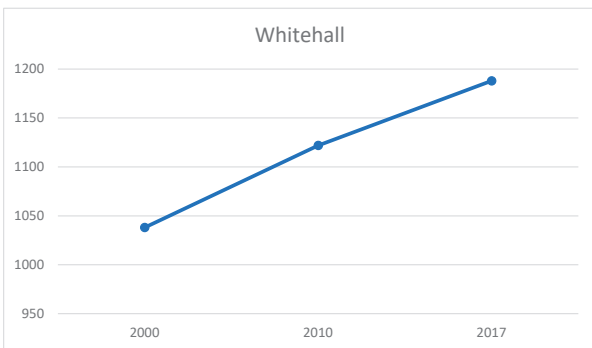
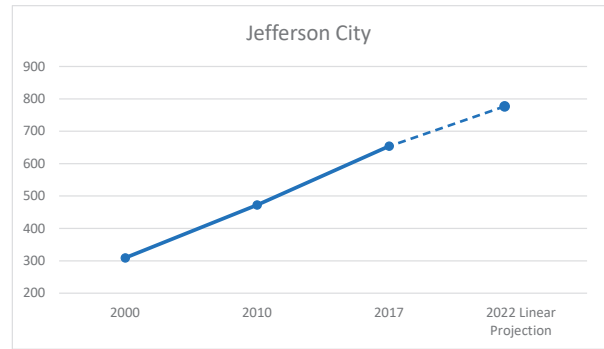
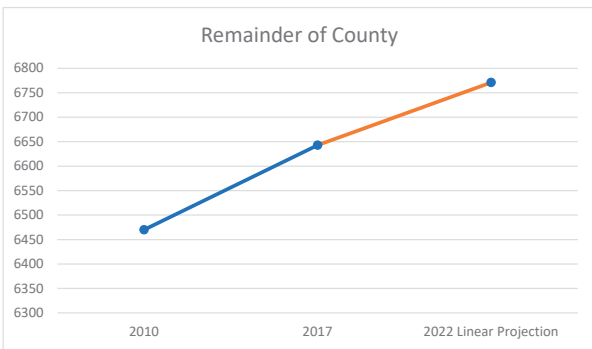
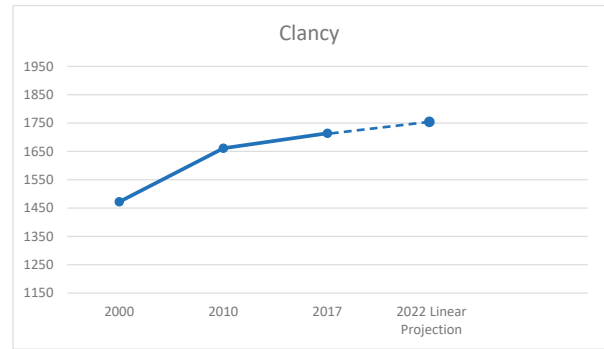
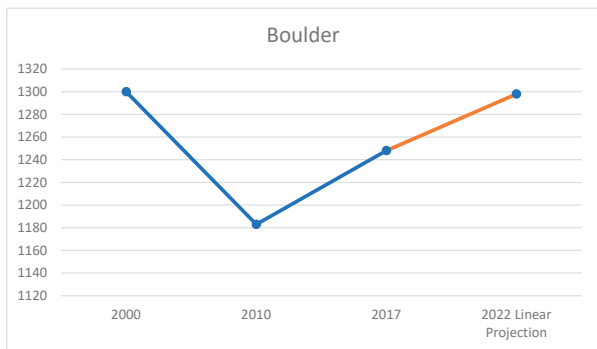
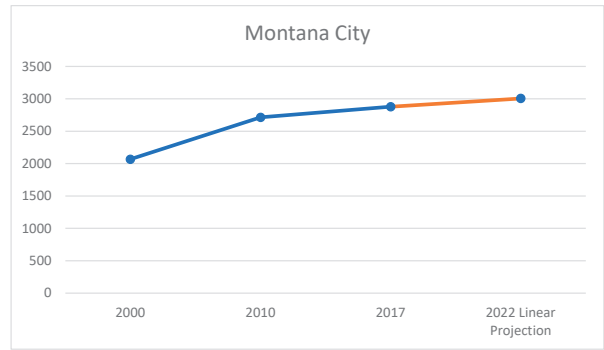
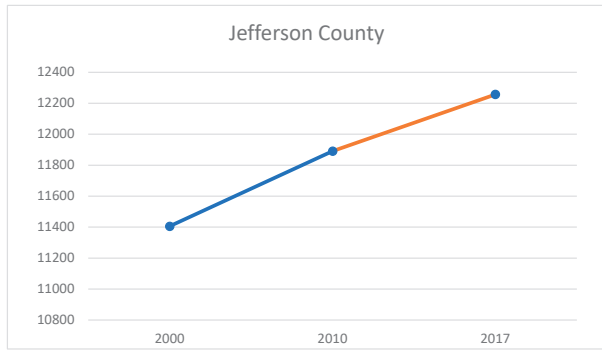
- Vacancy rates for rental units was 2018 was 4.4% in Jefferson County. The U.S. Dept. of Housing and Urban Development projects a tight housing market will continue for urban areas in the Rocky Mountain region.
- In the community survey completed as part of the Housing Needs Assessment, the most common issue among potential homebuyers in all three counties was the inability to find a house in their price range.
- Among survey respondents in Jefferson County, 70% indicated that there were too few rental places to choose from.
- **Conclusion: While Jefferson County is growing, the demand for housing is outpacing supply. Without significant additional new housing or rentals provided, it will be difficult for new families to find housing in Jefferson County, possibly forcing them to move to Lewis & Clark County or other neighboring counties.**

Affordability Gap

- Jefferson County had the most expensive housing price on average: \$250,750 to \$309,950 in 2017, as compared to the other two neighboring counties.
- U.S. Census data media rents: \$731 in Jefferson County, compared to \$802 in Lewis and Clark County.
- National Low-Income Housing Coalition estimates affordable rent based on a person's average hourly wages. The U.S. Census defines a household having a cost burden when 30% or more of monthly household income is spent on monthly housing costs. Jefferson County is experiencing a cost burden of 32.7%.
- **Conclusion: New families with less income cannot afford to purchase homes in Jefferson County. Also, new families cannot find quality rentable housing in the area either. This may cause families with children to relocate to a different county or area.**

Source: Tri-County Housing Needs Assessment, 2019.

Population Trends



From 2000-2017, the following areas have seen increases in population.

52.8%
JEFFERSON CITY
345 PEOPLE+

15.4%
JEFFERSON COUNTY
1,837 PEOPLE+

28.1%
MONTANA CITY
810 PEOPLE+

14.1%
CLANCY
242 PEOPLE+

Aging Population

- The median age in the tri-county area is higher than the statewide median age. It is projected that by 2022, the cohort over age 65 will comprise 21% of the population in Lewis and Clark County and 25% of the population in Jefferson County. The median age in Jefferson County is currently 47.9.
- **Conclusion: Almost a quarter of Jefferson County's population above 65. This aging population is not currently selling or renting homes in the county. They also rarely have children of school attendance age.**

Population Growth

- Over the past seventeen years, Montana City, Clancy and Jefferson City have experienced significant population growth, while Boulder has decreased in population overall.
- **Conclusion: Most of the growth in Jefferson County is focused on the north end, close to Lewis & Clark County and Helena. Growth has been zero or negative in Boulder and other towns in Jefferson County south of Jefferson City. Data would indicate that these trends will continue in the future.**

Population Growth	2000	2010	2017	# Change	% Change	Linear Projection 2022*
Jefferson County	10,054	11,406	11,891	1,837	15.4%	12,257
Boulder	1,300	1,183	1,248	52	-4.2 %	1,298
Montana City	2,068	2,715	2,878	810	28.1%	3,005
Clancy	1,472	1,661	1,714	242	14.1%	n/a
Jefferson City	309	472	654	345	52.8%	n/a
Whitehall	1044	1,038	1,122	78	7%	1,188
Remainder of County	n/a	6,470	6,643	173	2.7%	6,771

Source: U.S. Census Bureau, Census of the Population & American Community Survey (ACS)

Land Development Issues:

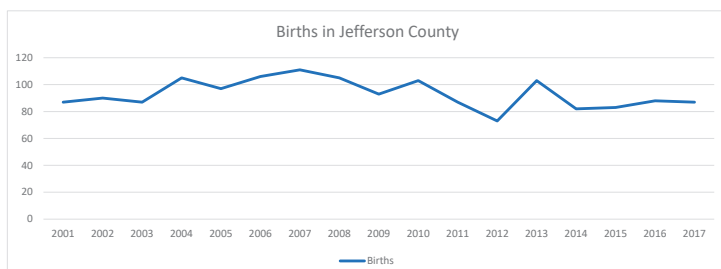
- The cost of building a new 1,500sf home is approximately \$300,000.
- **Conclusion: Other methods of land development and mechanisms to create affordable building costs need to occur before additional housing that is attractive to families with school-age children can be created.**

Births in Jefferson County

Birth rates in Jefferson County fluctuate over time, but have not shown any notable trend in increase or decreases over the sixteen year period. Based on the median age and percent of population over the age of 65 in Jefferson County, statistically the birth rates should stay similar or fall in the coming years unless younger families move in to the county.

	2001	2002	2003	2004	2005	2006	2007	2008	2009	2010	2011	2012	2013	2014	2015	2016	2017
Jefferson County	87	90	87	105	97	106	111	105	93	103	87	73	103	82	83	88	87

Source: U.S. Census Bureau, Census of the Population & American Community Survey (ACS)



Median Age

- Median age in all three counties is higher than the statewide average with Jefferson County having the highest median age in the three-county region. As the baby boom generation ages, it is projected that the population over age 65 will increase dramatically over the next five years.

Household Characteristics

- The average household size was somewhat higher in Jefferson County which is representative of the higher percentage of family households in the County. Of note is that the average household size is significantly lower for households with individuals over age 65.

Homeownership

Household Characteristics	Jefferson County
Total households	4,512
Family households	73.2%
Nonfamily households	26.8%
Households with individuals under 18 years	28.8%
Households with individuals 65 years and over	25.0%
Average household size	2.48
Average family size	2.90
Average household size with householder 65+*	1.54

Source: U.S. Census Bureau, American Community Survey 2012-2016

- Homeownership rates are the highest in Jefferson County compared to the rest of Montana, making finding rental opportunities more difficult.

Projected New Households

	# Housing Units	% Owner-Occupied	% Renter Occupied
Jefferson County	5,042	84.5%	15.5%
Montana	491,439	67.2%	32.8%

Source: U.S. Census Bureau, American Community Survey 2012-2016

- The following table is based on projected increase in number of households and factors such as homeowner rates and average household size. As indicated below, there is projected to be a significant demand for new housing over the next five years. Additionally, the percentage of households with persons age 65 and over will comprise one-third of the households in Lewis and Clark County and be equal to about 40% of the households in both Broadwater and Jefferson County.

	Jefferson County
Total Households – 2016*	4,512
Projected Households – 2022**	4,707
Projected Increase in Households (2016-2022)	195
# Increase in Renter Households (2016-2022)***	30
# Increase in Homeowners (2016-2022)***	165
Total Households Age 65+ - 2016*	1,128
Total Households Age 65+ - 2022****	1,951
# Increase in Households Age 65+ (2016-2022)	823
% Households with Persons Age 65+ (2022)	41%

Notes:

* Source = U.S. Census Bureau, American Community Survey

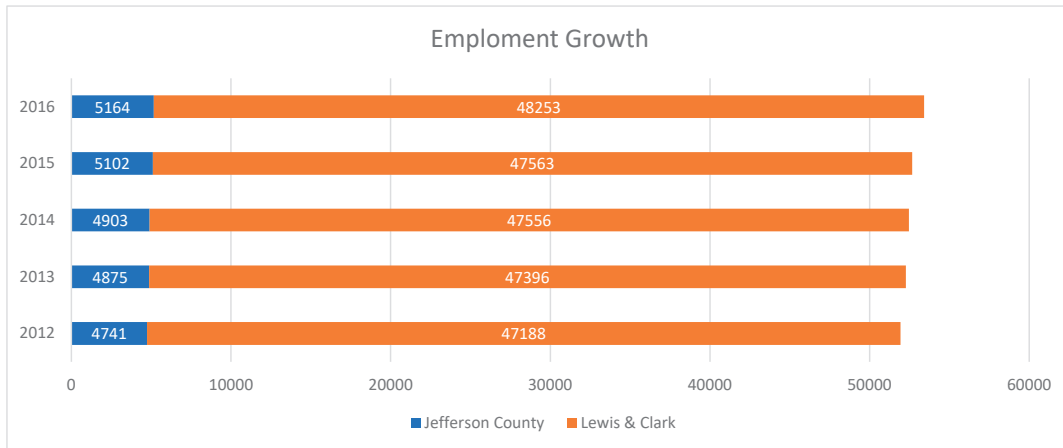
** - Montana Governor's Office of Economic Development

*** - Total increase in households multiplied by % of renters/homeowners per 2016 ACS data

**** - Projected population over age 65 divided by Average HH Size for householders over age 65

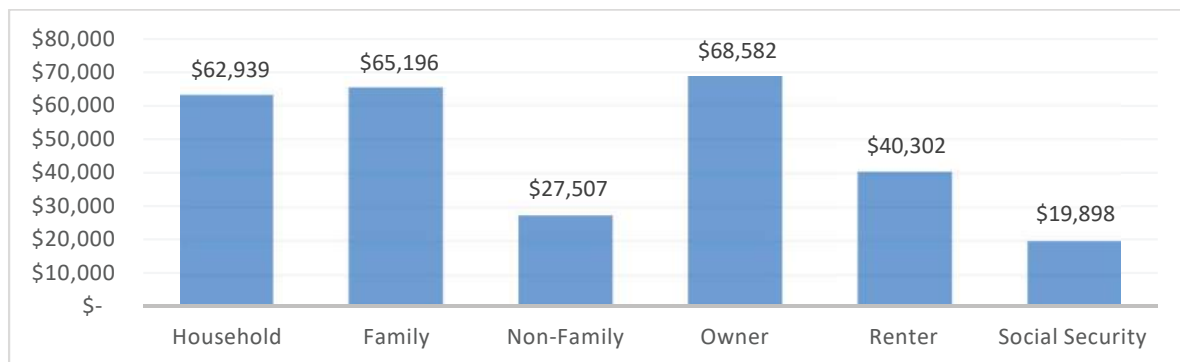
Employment Statistics

- As noted in the graph below, Jefferson County has experienced job growth over the last five years.
- However, statistics show that 60.3% of Jefferson County's workforce largely works outside of their county of residence.
- **Conclusion: The largest employment industry of Jefferson County residents is Government. With Lewis and Clark County being the state capital housing government jobs, one can assume many in Jefferson County are employed in Lewis in Clark County.**



Source: Montana Dept. of Labor & Industry, <http://lmi.mt.gov/Local-Area-Profiles> & U.S. Census Bureau, American Community Survey, 2012-2016 (Table B08130)

Income



Source: U.S. Bureau of the Census, American Community Survey, 2012-2016 (1) Incomes = Median incomes except for Social Security = Average income.

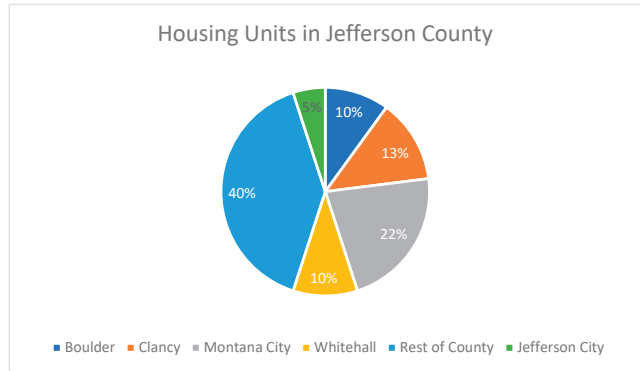
	Jefferson County
# of Households	4,468
Less than \$10,000	4.7%
\$10,000-14,999	2.9%
\$15,000-24,999	6.8%
\$25,000-34,999	9.8%
\$35,000-49,999	14.6%
\$50,000-74,999	19.3%
\$75,000-99,999	15.5%
\$100,000-149,000	16.7%
\$150,000-199,999	4.96%
\$200,000 or more	4.8%

Source: U.S. Bureau of the Census, American Community Survey, 2012-2016 (1) Incomes = Median incomes except for Social Security = Average income.

- The median household income for the tri-counties area is higher than the statewide average of \$48,380 with Jefferson County having the highest median income of the three counties.
- Jefferson County has the lowest percentage of lower income households with 14.4% making less than \$24,000 per year.

Housing in Jefferson County

Boulder is the county seat but only accounts for 10% of the housing units in the County. The majority of housing in the county is located between Jefferson City, Clancy and Montana, totalling 40% of available housing in Jefferson County. The housing stock in Jefferson County is more predominantly single-family homes than the other two counties. The largest share of mobile homes is located in Boulder and the rural areas of the county. Montana City has the largest share of housing units of all unincorporated “Census Designated Places” available in Jefferson County.



Vacancy Rates

	Housing Units	% Vacant Owner	% Vacant Rental
Jefferson County	5,042	1.4%	4.4%

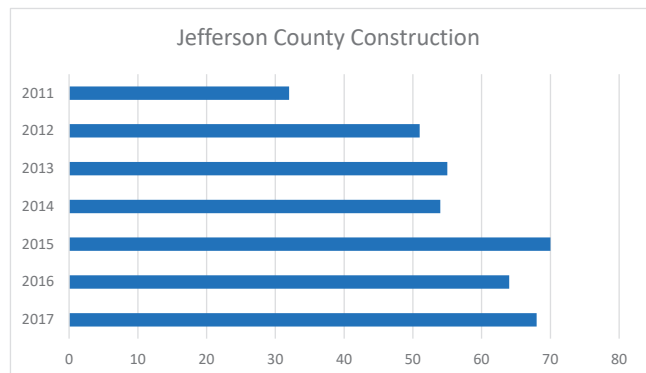
Housing Units in Jefferson County

	Total Housing Units	# SF	% SF	Duplex	Multi-Family	Mobile Homes
Jefferson County	5,042	4,238	84.1%	192	21	591
Boulder	498	333	66.9%	16	12	137
Montana City	1,084	994	91.7%	68	0	22
Clancy	662	613	92.6%	5	0	44
Whitehall	526	400	76.0%	53	9	54
Remainder	2,275	1,898	83.5%	50	0	334

Source: U.S. Census Bureau, American Community Survey 2012-2016

Construction Activity

The Montana Building Industry Association maintains data for single-family housing starts in Montana on a county-wide basis. Data is compiled primarily from electrical permit data. According to this data, building activity fluctuates on an annual basis but has recovered from the economic recession that was still impacting the area in 2010.



Source: Montana Building and Industry Association, <http://montanabia.com/housingStarts>

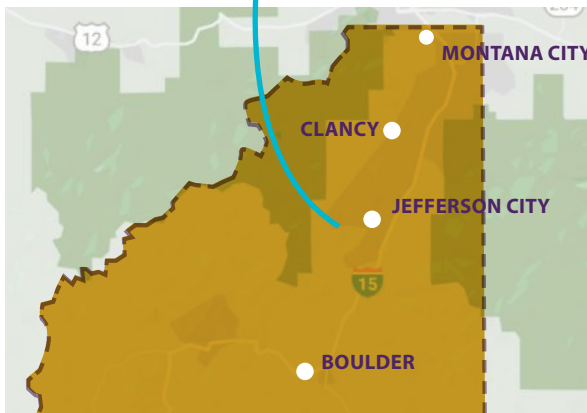
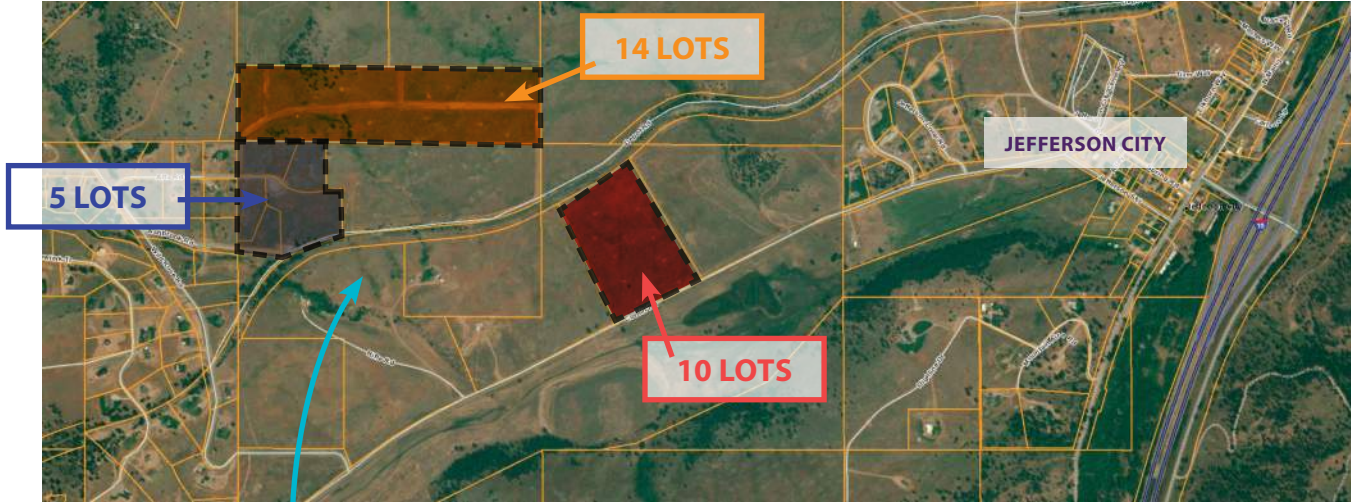
Developments

During the compilation of this report, SMA Architects reviewed the status of current Jefferson County developments with the County Planning Department. It was reported that new subdivisions are nearly nonexistent in Jefferson County, with the exception of three in Jefferson City:

Source: U.S. Census Bureau, American Community Survey 2012-2016

- One planned subdivision of 14 lots
- One planned subdivision of 10 lots
- One planned subdivision of 5 lots

Other developments in Jefferson County were minimal, with existing lots or homeowners converting properties into rental units or 2- and 4- plex single-structure construction. While these could not be precisely identified, the conclusion was drawn that it would not have a noticeable change to population or students of school age.



	Single-Family Homes Anticipated	Total Additional K-12 Students
Jefferson City Subdivisions	29	14.21
Current Trends on Additional Available Land	60.33	29.56
Total Anticipated K-12 Students		43.77
Average # Students per Grade		3.37/year

Source: Interview and Correspondence with Jefferson County Planning Department, June 2019
 Map Source: Montana Cadastral website, <http://svc.mt.gov/msl/mtcadastral>. Retrieved July 2019
 Approximately .49 child per single family residential unit (Source: U.S. Census Bureau, American Fact Finder)

Impacts of Land Development on Jefferson High School District #1

- To understand an estimated number of students that could become residents of the county, we averaged Jefferson County Construction electrical permits over the past seven years and combined that number and combined that number with total planned lots in new subdivisions. In estimating that each new construction will be a single-family residence, the U.S. Census Bureau says that for each new residential unit, .49 child can be estimate for each new unit. If these students were to come all at once, which would be highly unlikely, and were spread over the K-12 grades, the impact would be 3.37 children per grade. Of those children, it is unknown how many would choose to attend high school out-of-district.

Challenges to Developments

A few other challenges exist to new developments and affordable housing:

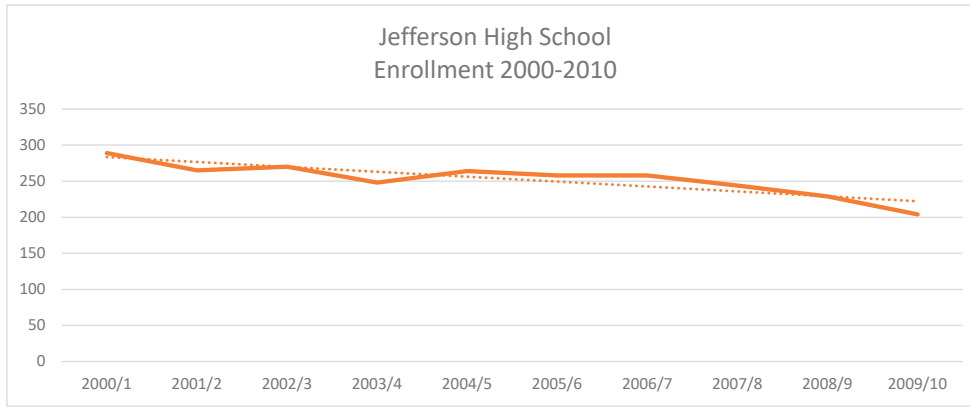
- The Jefferson County zoning map was just completed. It provides zoning layouts that make it challenging to convert

land use to single-family homes on affordable lots. Most residential lots are already subdivided into the smallest lot sizes available per the Zoning map.

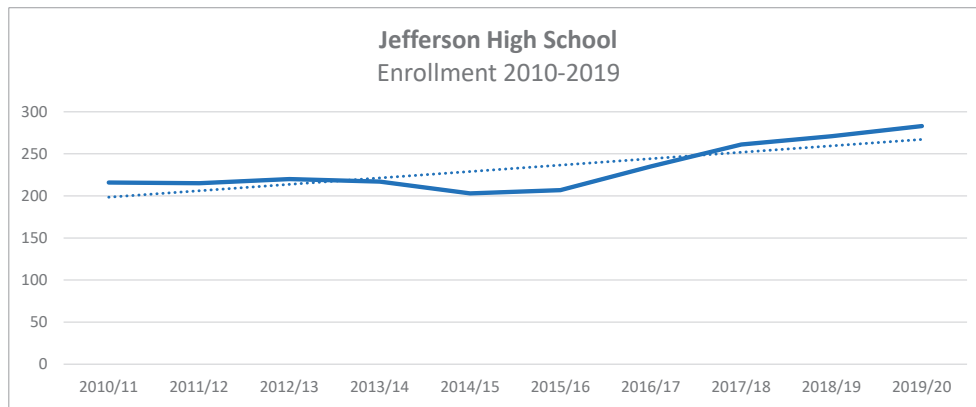
- Most homes in the County are on well and septic systems. The Montana Department of Environmental Quality (DEQ) restricts the number of wells and septic systems per acre, which means that new subdivisions and developments would have to create water supply systems and districts that would be expensive. As such, lot sizes are no smaller than 1-2 acres per DEQ standards.
- Additional county growth is minimal. Many smaller lots south of Basin are old mining claims that have been converted into housing. These claims are sometimes remote and difficult to access, so the number of school age children is not significant.

Enrollment

Over the ten-year period from 2000-2010, Jefferson High School District #1 experienced a drop in enrollment of 85 students, or a -29% change.

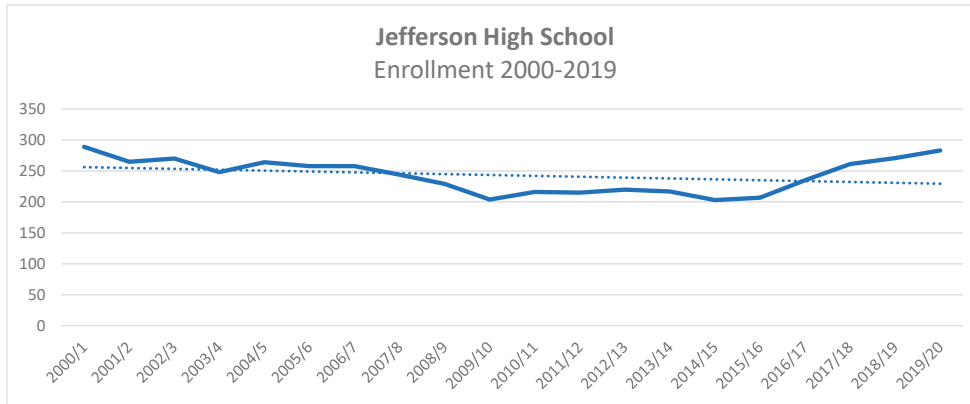


Over the most recent nine years, Jefferson High School District #1 experienced an increase in student enrollment of 68 students, or an increase in 24%.



Source: Enrollment Figures provided by Jefferson High School, Clancy Elementary, Montana City Schools, and Boulder Elementary. 2019.

Enrollment (continued)



Over the past nineteen years, Jefferson High School District #1's enrollment has experienced a decrease in the first part of the period, followed by a gradual increase in enrollment leading up to 2019. The school years 2009/10 and 2014/15 had the lowest enrollment numbers of 204 and 203 students respectively. We believe the lowest enrollment periods may have been due to the recession.

If enrollment continues to trend upwards, as it has in the period of 2015 to present, Jefferson High School could experience enrollment of over 300 students.

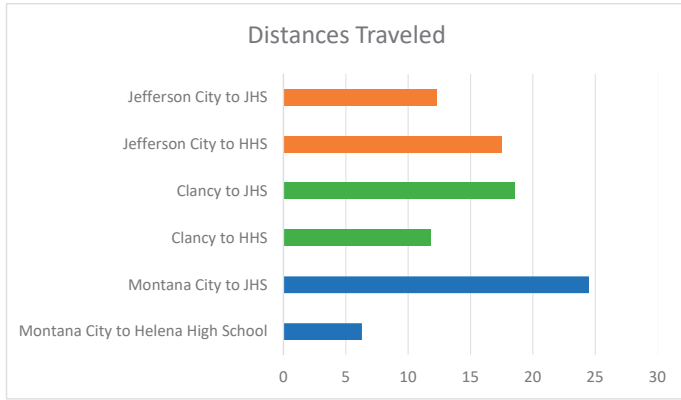
The demographic studies of Jefferson County have informed our enrollment projections. We believe that due to housing availability, the average age of residents of Jefferson County, cost of living and convenience of those employed in Helena, that Jefferson High School will likely see slow increase in enrollment, with it eventually plateauing.

Students Leaving the District

Jefferson High School District #1 is unique in the fact that students come from several communities in the county, including those of Montana City, Jefferson City, Clancy, Basin and Boulder. These communities have elementary and middle school programs and are considered 'feeder schools' for Jefferson High School District #1. These communities each have independent K-8 Districts, with Basin only being a K-6 District.

Students coming from Montana City to Jefferson High School travel the farthest distance on average. The neighboring Helena School District in Lewis and Clark County offers students from Jefferson High School District the option of attending their District by charging tuition, on average \$175 per student, per year.

School		2012/13	2013/14	2014/15	2015/16	2016/17	2018/19	Total 4 Years
Clancy Elementary	Out-of-District	9	n/a	12	2	8	7	29
	In-District	24	n/a	16	23	22	30	91
Montana City	Out-of-District						194	
	In-District						40	
Boulder	Out-of-District	0	0	0	0	0	0	0
	In-District	0	0	0	0	0	0	0
Basin	Out-of-District	0	0	0	0	0	0	0
	In-District	0	0	0	0	0	0	0

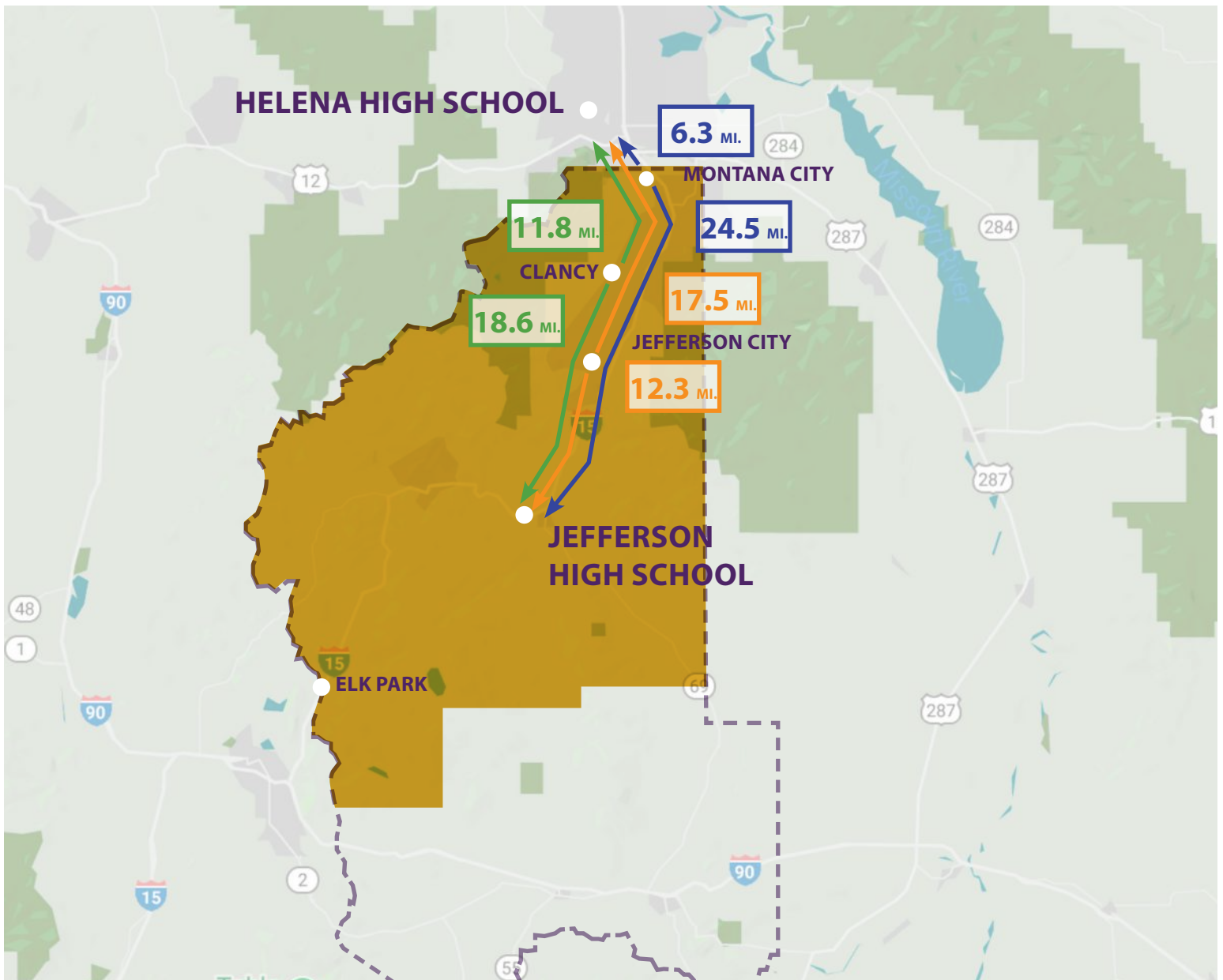


Accurate records for students leaving the Jefferson High School District go back as far as 2012-2013, but until recently may not be an accurate reflection of the number actually leaving. Numbers fluctuate from year to year, with 34% students leaving the District on average, of those that come from 'feeder schools'.

Students residing in Montana City and Clancy travel longer distances to Jefferson High School than to Helena High School.

Winter driving conditions, road construction, and accident delays can increase these travel times, resulting in late attendance. According to the Jefferson High School Transportation Survey Results, 76.83% of survey respondents get to school via bus. Of those respondents, 41.46% were freshman. The survey does not include where those students are traveling from. Survey respondents reported that the school and activity bus service worked well for them. ■

Source: Jefferson High School District #1 Transportation Survey Results. 2018.



page left blank intentionally



Staff Questionnaire

Staff Questionnaire Findings

As part of our work with Jefferson High School District #1, SMA conducted a questionnaire of the school's staff. Of the sixteen respondents, there were mixed reviews about certain areas of the school's building, programs and geography, while there was consensus on many areas. The full surveys are located in Appendix A for reference.

Survey respondents reported many positive assets for Jefferson High School. Of those, the small town feel, and personalized, one-on-one education is a great asset to the students. Teachers get to know students, and are able to offer very personalized education, where no students 'fall through the cracks'. The school is an integral part of the community of Boulder, proving to be of great pride of the staff. The community enjoys many of the great programs the school provides, of those being theater and athletics. The staff reported that the school is kept clean, but is in need of general upgrades due to it being outdated. Staff also noted that the availability and type of technology is an asset to the school, but electrical outlets are lacking due to the age of the building. Other positive aspects of the school include having two gyms, a nice library, outdoor classrooms, and CTE programs. Staff believe the activity bus is an asset to the students, as well as the four-day school week. Staff also reported that they believe the school is safe and secure largely due to the nature of the community and its surroundings, however could benefit from having one point of entry.

Staff also reported on areas where the school could use improvements, both in programming and condition or limitations of the building. Storage appears to be a common complaint, as well as the general size and availability of equipment in the Science classrooms. The National Science Teacher's Association recommends 60 square feet per pupil for today's science classrooms. With thirty pupils per class, that would equate to 1,800 square feet per science class. As further described in this report, that size can vary greatly for each school dependent on type of science curriculum offered.

Overall general classroom size and number of classrooms available seems to be considered adequate by staff currently, however the modular classrooms received mixed reviews. The Fine Arts were reported to be lacking adequate space, including having dedicated space for the popular theater program. The art classrooms were reported as being difficult to access. Having a dedicated

computer lab was noted as a deficiency. Testing can often be a challenge to complete in the library. Other noted areas of the school that need work or updating include the landscaping, track, cafeteria, tennis courts, library floor and general finishes.

The community of Jefferson High School was noted to be very familiar, positive and welcoming, however, staff mentioned that it can be challenging to foster relationships among the feeder schools with students coming from Montana City, Jefferson City, Clancy and Basin. There were mixed comments about perceptions of Boulder as a community and Jefferson High School's opportunities. Many feel that students often choose to go to Helena High School for more opportunity, whether athletically, academically, or otherwise. Some staff also believe that the convenience of going to Helena can be another factor. Geographically, the Boulder Hill was a common comment as well as the rural nature of the area.

Many staff responded that the school does a great job at preparing the students for the future, but could improve their advanced course offerings, as well as general career readiness. Staff also reported on availability of housing and hope to see Jefferson High School offering a competitive wage to attract staff. ■



Community Survey
Student Survey
Community Meetings

Community Survey
Most Commonly Cited

Q1

30%
LOCATION/
DISTANCE/TRAVEL
93 PEOPLE

12%
STUDENTS GOING
OUT OF DISTRICT
37 PEOPLE

11%
SCHOOL OFFERINGS
34 PEOPLE

Q2

41%
BOULDER HILL/
TRAVEL
127 PEOPLE

16.8%
ENJOY SMALL SCHOOL /
COMMUNITY
52 PEOPLE

9.7%
SIZE OF DISTRICT
30 PEOPLE

Q3

9.1%
EXPAND CURRENT
FACILITIES
28 PEOPLE

7.8%
IMPROVE
PROGRAMS / STAFF
24 PEOPLE

7.4%
NORTH CAMPUS
DIVERSIFY
CURRICULUM
33 PEOPLE EA.

Q4

23.3%
UPDATE FACILITIES
72 PEOPLE

16.2%
OLD / DATED
50 PEOPLE

15.9%
ADEQUATE / FAIR
49 PEOPLE EA.

Q5

59.5%
LOCATION
184 PEOPLE

36.9%
EXTRACURRICULARS
114 PEOPLE

33%
CURRICULUM
102 PEOPLE

Q6

57.9%
YES
179 PEOPLE

23.0%
NO
71 PEOPLE

Community Survey

Findings

Number preceding theme represents the number of times the item was mentioned in the community survey.

QUESTION 1: WHAT ARE THE BIGGEST CHALLENGES TO JEFFERSON HIGH SCHOOL DISTRICT #1, IN YOUR OPINION?

- 93 Location/Distance/Growth of North End/ Commute/Traveling Costs/District Size (overall the placement of the school relative to the population and county)
- 37 Loss of Students to Helena/New East Helena School/Keeping North End Students Recruitment for JHS
- 34 Extracurricular Activities/Programs Available/ Classes Available/Sports
- 32 Academic Quality/Opportunities/Curriculum
- 21 Size of School/Classrooms/Student Body
- 20 Retaining Quality Staff
- 20 Budget/Funding/Finances
- 14 Communication between the school and parents, outside entities, staff, etc./Lack of Information to parents and families
- 10 Taxpayer Issues/Diversity/Base
- 8 Facilities and Equipment
- 8 Bus System/Transportation
- 7 Maintaining Steady Enrollment
- 5 Math Program
- 4 Wages
- 4 Transient Population/Low Income/Economic Rift
- 4 Parents Work in Helena
- 4 Athletic Director/Coaching/Sports Results
- 3 Following Leadership/Pushing personal agenda/ Board Members
- 3 Lack of a high school in Montana City/Clancy/More than 1 High School
- 3 School Day Schedule and what not
- 2 ACT prep/Higher standardized test scores
- 2 Alcohol/Drugs
- 2 Lack of Diversity
- 2 Small Town/Boulder Stigma
- 2 Life Skills
- 2 Old Infrastructure/Outdated Building(s)

- 2 Lack of Support from the Community
- 2 More Focus on Academics over Athletics
- 2 Internet Access/Technology
- **Other (Each received 1 vote):**
- Insensitivity
- Passing Mill Levies on North End when new schools open
- Science Program
- Funding for Band and Theatre
- Bullying
- Lack of Jobs/Economic Opportunities
- Building Issue
- Staff/Board Bias effecting individual students
- Adapting to Internet Based Learning
- Sharing of Resources with other communities Examples provided: Whitehall, MT City
- Parent and Community Involvement
- Special Ed Department
- Not many draws/Fun things to do in Boulder
- Update Track
- Remaining a Small School with projected growth
- Previous Connections to Helena
- North/South Boundaries
- Modular Classrooms
- No longer Represents the Majority of its Constituents
- Excessive Parent Involvement
- Poor Leadership
- Attendance
- Those who Desire another High School on the North side
- This Survey

QUESTION 2: WHAT CHALLENGES DOES THE GEOGRAPHY OF JEFFERSON HIGH SCHOOL DISTRICT #1? WHAT OPPORTUNITIES?

- 127 Boulder Hill/Distance/JHS Location/Winter Driving
- 52 Enjoy the Small Town Community/School, Opportunities that come with a smaller school
- 30 Size of the District/Spread of People
- 25 Bus System/Transportation
- 19 School not where majority of population is/ Growth of the North End

- 19 North End Proximity to Helena/East Helena, JHS being too distant
- 18 No Challenges
- 16 Loss of students to Helena
- 9 Good Central Location
- 9 Parent(s) Work in Helena
- 8 Student Diversity Mostly Positive, 23 feel diversity is not where it needs to be
- 7 Divide Between North and South (More Affluent in MT City compared to other areas)
- 6 Opportunity to build a new high school in MT City/ North
- 5 Bus System is good
- 3 Outdoor Science opportunities
- 3 Scenic Boulder Valley
- 2 Redistribution for North End to attend EHHS
- 2 Do not want to see another high school on north end
- 21 Other (Each received 1 vote):
- Housing
- Loss of Potential Resources
- Size of School
- Disagreement Within the County on how to Handle Things
- Finding Quality Staff
- Quality Internet Access
- Separation of high school and elementary is a problem
- Not Much of Interest in Boulder
- Purchase the old MDC Buildings
- Good to get people into Boulder
- Lack of Parking
- Want to see more PBL (Project Based Learning) and Field Studies
- Less Substance Abuse
- Lack of Potential Future Growth of Boulder, few job opportunities
- Consolidation of Resources and Facilities
- Accessibility
- Location of Feeder Schools
- Make North its own District
- Improve Class Offerings
- Improve Leadership
- Opportunity to Choose Where to go to School

QUESTION 3: WHAT DO YOU WANT TO SEE FOR THE FUTURE OF THE JEFFERSON HIGH SCHOOL DISTRICT #1? WHAT DOES THE DISTRICT 'LOOK LIKE' IN 5,10,20 YEARS, AND BEYOND?

- 28 Growth/Expansion of Existing
- 24 Increase the Quality of Academics/Athletics/ Opportunities, Competitive Programs (Bettering of Programs and/or Staff)
- 23 North End Campus/5 Possible North Campus
- 23 More Diverse Curriculum/More Classes Offered Ex. More Rigorous courses, trade classes, technical classes, etc.
- 16 Make Necessary Upgrades/ Improvements/ Repairs/Additions Ex. Cafeteria, track, Gym, classrooms, remove modular classrooms
- 8 Adding Extracurricular Activities
- 6 No Northern Campus/School Remains Where it is
- 5 Little to no change
- 3 Academic Needs Met
- 3 Better College Prep/Life Skills Taught
- 3 Really Embrace the Small School Setting
- 2 New Athletic Staff
- 2 Getting more in district students to attend JHS
- 2 Higher Wages
- 2 Better Communication
- 2 Better Recruitment
- 2 JHS Becomes Specialized School Ex. Vocational, trade, electrical, mechanical, etc.
- 2 New and Better Tech
- 2 Better Math Program
- 2 Better Bus System
- 2 Give Best Experience to those that attend (Face reality that many northerners will choose Helena)
- 2 Redistricting
- 1 Greater Focus on Arts
- 1 Purchase of MDC Buildings
- 1 Enhance/ Upgrade Incrementally as needed
- 1 Unity
- 1 Don't Follow National Spending Norm
- 1 Depends on Growth of School/Population
- 1 Satellite Campus in North
- 1 Bridge the Mental Divide Between North and South
- 1 One New School Building for the Entire District
- 1 Overall Stability

- 1 Civics
- 1 For Boulder to Stop Monopolizing all the money
- 1 Less Turnover
- 1 Lower Taxes
- 1 Keep 4 Day School Week
- 1 See it Eventually Closing
- 1 Updated Website
- 1 More Accessible School
- 1 Decrease in Substance Abuse
- 1 More Mental Health Awareness
- 1 More Support of teachers and their programs
- 1 See What Happens with East Helena
- 1 Students Stay in Contact with Elders
- 1 Students Have more Community Involvement
- 1 Retain Jefferson District Students
- 1 Stop HHS from marketing in Jefferson
- 1 Acceptance of all Kids
- 1 End of Transgender Bathroom
- 1 No Satellite Campus on North End
- 1 Gifted Ed Program
- 1 Transition to Class C
- 1 More is not the answer
- 1 Have School Become the Hub of the Community
- 1 Integration of Project Based Learning

QUESTION 4: DESCRIBE YOUR OVERALL IMPRESSION OF THE INTERIOR AND EXTERIOR OF JEFFERSON HIGH SCHOOL'S FACILITIES.

- 72 Needed Updates/Improvements/Additions/ Repairs/Remodels/Expansions/Face lift Examples Given: Multipurpose rooms, removal of modular classrooms, all weather track, resurface of tennis courts, update classrooms, fix potholes in parking lot, remodel locker rooms, fixing plot roof on old gym, football field, outdoor basketball courts, culinary arts
- 50 Old/Dated
- 49 Fine/Fair/Okay/Adequate/Well Kept
- 33 Good/Nice
- 16 Clean
- 10 Drab Colors/Needed New Colors
- 10 Serviceable/Workable/Functional
- 10 Exterior Good
- 8 Better Exterior Ground Upkeep Needed
- 8 Poor/Below Average/Rundown

- 6 Small
- 5 Needed Security Updates
- 4 More Parking/Improve Parking Lot
- 3 Great
- 2 Focus on Educational Value
- 2 Needs to be Cleaner
- 2 Improved Lighting Needed
- 2 New High School Needed
- 2 More Exterior Landscaping Ex. Shrubs, flowers
- 2 Better Signage Needed
- 1 Interior Good
- 1 Display more Student Work
- 1 Put up School Motto
- 1 No More Money Spent on JHS
- 1 Unhappy with New Logo

QUESTION 5: 200+ STUDENTS CHOOSE TO GO TO HELENA HIGH OVER JEFFERSON HIGH SCHOOL EACH YEAR. WHAT FACTORS DO YOU BELIEVE INFLUENCE THEIR DECISION TO ATTEND HIGH SCHOOL OUT OF DISTRICT? HOW CAN JEFFERSON HIGH SCHOOL CAPTURE MORE IN DISTRICT STUDENTS?

- 184 Location
- 114 Extra circulars (both quantity and quality)
- 102 Curriculum (both quantity and quality)
- 34 Promote Small School Setting
- 28 Promote a better sense of JHS actually offers
- 25 Class Size – liking a more diverse (larger) class size
- 20 No social attachment to JHS
- 18 Facility size/aesthetic
- 12 Four Day Week

QUESTION 6: WITH THE MONTANA DEPARTMENT OF COMMERCE CENSUS & ECONOMIC INFORMATION CENTER PROJECTING JEFFERSON COUNTY'S POPULATION TO GROW BY 59.2% BY 2030, DO YOU BELIEVE THAT JEFFERSON HIGH SCHOOL IS IN NEED OF EXPANDING ITS FACILITIES TO MEET CURRENT GROWTH PROJECTIONS?

- 179 Yes – should be build on north side or where most students will be attracted
- 71 No

Student Survey

Most Commonly Cited

Q1

35.9%
LOCATION
14 STUDENTS

15.4%
OF STUDENTS
SCHOOL SIZE
6 STUDENTS

11%
SCHOOL OFFERINGS
14 STUDENTS

Q2

69.2%
BOULDER HILL/
LOCATION
27 STUDENTS

12.9%
NO CHALLENGES
5 STUDENTS

Q3

33.3%
GROWTH/
EXPANSION
13 STUDENTS

20.5%
UPDATES/
ADDITIONS/ETC.
8 STUDENTS

15.4%
UPDATES TO
ATHLETICS
6 STUDENTS

Q4

41%
NEED
IMPROVEMENTS
16 STUDENTS

23.1%
OUTDATED
9 STUDENTS

20.5%
GOOD/FINE
8 STUDENTS

Q5

41%
DISTANCE/LOCATION
14 STUDENTS

33.3%
DIFFERENCE IN
SPORTS/FACILITIES
13 STUDENTS

28.2%
SIZE OF SCHOOL
11 STUDENTS

Q6

84.6%
YES
33 STUDENTS

10.3%
NO
4 STUDENTS

Student Survey

Findings

QUESTION 1: WHAT ARE THE BIGGEST CHALLENGES TO JEFFERSON HIGH SCHOOL DISTRICT #1, IN YOUR OPINION?

- 14 Location/Getting to School
- 6 Students/Number of students
- 6 Classroom/School Size
- 6 Staff
- 2 East Helena
- 2 Building Age/Condition
- 2 Drama Department Room/Stage Size
- 2 Spending ability/distribution
- 2 Lack of Opportunities
- 3 Gym/Sports Facility Issues
- 2 Homework
- 1 Room Conditions
- 1 Lacking Technology
- 1 Courses Offered
- 1 Drugs

QUESTION 2: WHAT CHALLENGES DOES THE GEOGRAPHY OF JEFFERSON HIGH SCHOOL DISTRICT #1? WHAT OPPORTUNITIES?

- 27 Location/Getting to School/Boulder Hill – Mostly negative some positive
- 5 No Challenges
- 2 Expansion of School/Gym
- 2 Lack of Opportunity
- 1 Extracurricular Activities/Sports
- 1 Art Room Distance
- 1 Good Teacher to Student Ratio
- 1 Drugs
- 1 Good Staff
- 1 Lack of Size
- 1 Sports
- 1 Shop Classes
- 1 Personable

QUESTION 3: WHAT DO YOU WANT TO SEE FOR THE FUTURE OF THE JEFFERSON HIGH SCHOOL DISTRICT #1? WHAT DOES THE DISTRICT 'LOOK LIKE' IN 5,10,20 YEARS, AND BEYOND?

- 13 Growth/Expansion

- 8 Updates/Additions/Renovations
- 6 Improvements for Sports Teams/Sports Facilities
- 4 More offered courses/More opportunities
- 3 Movement of Campus/New School
- 2 More Funding for Extracurricular Activities
- 2 Little to no change
- 2 Increase in Staff
- 1 New kitchen floors and counters
- 1 Technology Advancements
- 1 Renovations
- 1 Improved Communication between teachers and students
- 1 Better Learning Environment

QUESTION 4: DESCRIBE YOUR OVERALL IMPRESSION OF THE INTERIOR AND EXTERIOR OF JEFFERSON HIGH SCHOOL'S FACILITIES.

- 16 Needed Improvements
- 9 Outdated
- 8 Good/Fine
- 6 Fair
- 1 Poor

QUESTION 5: 200+ STUDENTS CHOOSE TO GO TO HELENA HIGH OVER JEFFERSON HIGH SCHOOL EACH YEAR. WHAT FACTORS DO YOU BELIEVE INFLUENCE THEIR DECISION TO ATTEND HIGH SCHOOL OUT OF DISTRICT? HOW CAN JEFFERSON HIGH SCHOOL CAPTURE MORE IN-DISTRICT STUDENTS?

- 16 Distance/Location
- 13 Difference in Sports Programs/Facilities
- 11 Size of School/Number of Students
- 7 More Opportunities
- 7 More Offered Courses/Extracurricular Activities
- 4 Lack of Advertisement of Jefferson High
- 4 Students want to be with their friends, and many attend HHS
- 3 Quality of Staff
- 3 Improvement of Facilities
- 1 Level of Education
- 1 Dress Code
- 1 Better Math Program
- 1 School Day Schedule
- 1 Improve Technology

- 1 Improved Bus System
- 1 Better Scholarship Opportunities
- 1 Movement of Jefferson High

QUESTION 6: WITH THE MONTANA DEPARTMENT OF COMMERCE CENSUS & ECONOMIC INFORMATION CENTER PROJECTING JEFFERSON COUNTY'S POPULATION TO GROW BY 59.2% BY 2030, DO YOU BELIEVE THAT JEFFERSON HIGH SCHOOL IS IN NEED OF EXPANDING ITS FACILITIES TO MEET CURRENT GROWTH PROJECTIONS?

- 33 Yes
- 4 No
- 2 Update of current facilities first

Community Meeting

Findings

QUESTION 1: WHAT ARE THE BIGGEST CHALLENGES TO JEFFERSON HIGH SCHOOL DISTRICT #1, IN YOUR OPINION?

MONTANA CITY

- Location, Boulder hill, geography
- Hazardous trip for inexperienced drivers
- Commute time plus activities and homework make for late evenings
- No problem with distance
- Buses keep students accountable, safe, able to participate in extracurricular, and help them build relationships
- Land availability for housing is limited in Boulder
- Land available in northern Jefferson County
- Fewer opportunities in Boulder than Helena
- Smaller class size
- Variety of sports not available
- HHS more difficult to play in, or play multiple sports
- Specialized courses more difficult

JEFFERSON CITY / CLANCY

- Unaware of opportunities at JHS
- Geography
- Size of District
- Boulder not as far as it seems
- Facilities are already overutilized
- Older facilities
- Challenge keeping program delivery fresh with constantly changing needs
- Lack of variety in extracurriculars
- Enough variety in extracurriculars
- Lack of outreach to northern Jefferson County communities
- Communicate student accomplishments
- Improve transition from elementary to high school
- Use more main stream media (i.e. Helena IR)
- Bigger isn't always better
- Maintain quality, student: teacher ratio
- Students prefer to stay with cohort
- Safety/security concerns with modulars

BOULDER / BASIN

- Perception
- Reputation
- Reputation of Academic Programs
- Reputation of Athletic Programs
- Small school size is beneficial
- Cultural Difference between Boulder and Northern Jefferson County
- Geographic
- Different districts /different exposure
- Not economically feasible for a school to serve all needs – ref. 1980's study
- Huge District
- Unknown how many are incoming
- Difficult to plan for future
- Teacher funding should be like Helena High School
- Applicant pool for staff is limited

QUESTION 2: WHAT CHALLENGES DOES THE GEOGRAPHY OF JEFFERSON HIGH SCHOOL DISTRICT #1? WHAT OPPORTUNITIES?

MONTANA CITY

- Boulder Hill
- Kids driving vs. busing (weather, activities, etc.)
- Transportation Survey results discussed as being a positive asset to students
- Teacher application pool
- Outdoor opportunities, more rural nature, family reasons are positive
- Discussion of a school in northern Jefferson County (site, distance, etc.)

JEFFERSON CITY / CLANCY

- Two unique communities split by distance
- Do we put money where growth of population is?
- Is there land in possession?
- School Trust Lands
- Choose to live where it is inconvenient
- Sense of community in Boulder as a town, includes JHS
- Summer Sports Bus available
- Northern Jefferson County affiliates more with Helena community

- No longer frowned upon to go to JHS
- JHS Facilities in need upgrades despite of growth
- Unite community
- Bus students to new north facility instead?

BOULDER / BASIN

- Geography / Mountain Pass
- Boulder has better water/sewer
- Bus Transportation budget considerations
- Busing time compared to time on Helena buses
- Reliable transportation between school, activities, sports
- Positive: District has ensured bus transportation is available for all activities/sports
- Opportunity to send kids to Class B school
- Northern properties are higher value creating good tax base
- Opportunity to come from 3 different schools and meet to develop friendships and grow
- Opportunity to play in sports
- JHS creates community and camaraderie

QUESTION 3: WHAT DO YOU WANT TO SEE FOR THE FUTURE OF THE JEFFERSON HIGH SCHOOL DISTRICT #1? WHAT DOES THE DISTRICT 'LOOK LIKE' IN 5,10,20 YEARS, AND BEYOND?

MONTANA CITY

- Continue student focus
- Destination to move families
- Community base – band, dinner, theater, dance, fundraisers
- Continue being affordable to attend
- Parity between academic opportunity (JHS vs. HHS) – make more similar
- Question of EHHS added and HHS cuts
- District could improve communication/education of opportunities available
- Would like to hear what District envisions for future
- Band, drama are popular – auditorium needed
- Indoor Swimming Pool
- Lots of interest in dual credit/AP/trade fairs

JEFFERSON CITY / CLANCY

- Focus on current student population and what is best for them
- Focus less on recruitment
- Adding activities is not possible unless we have the population
- JHS currently doing well with activities
- Expansion of facilities needed
- Grow sports
- Growth in specific communities substantiates 59.3% growth
- Busing students from north will continue to get more costly
- Hope that in future everyone wants to go to JHS
- Lack of unity when new to District from feeder schools
- No summer camps in Boulder
- High School in North would be significant to taxes
- Lots of interest in dual credit/AP/trade fairs
- Desire to take care of our own students

BOULDER / BASIN

- Add career readiness opportunities
- Enlarge campus
- Remove modulars
- Improve/expand Culinary Arts
- Need Stage for Drama/Presentations/Performance
- Wrestling Room is small
- Football grandstands good, field is in need of upgrades – artificial turf?
- Facilities currently not accommodating current programs
- Technology needs
- Place for Golf Team to practice
- Utilize MDC campus facilities (i.e. pool)
- Competitive for staff (salary, perks, teacher housing, small community)
- Currently recognized for technology, computers, software
- Expansion is good, but keep Class B
- Tuition out-of-district
- Keep sense of community the same

QUESTION 4: DESCRIBE YOUR OVERALL IMPRESSION OF THE INTERIOR AND EXTERIOR OF JEFFERSON HIGH SCHOOL'S FACILITIES.

MONTANA CITY

- Exterior, site, fencing, tennis need updated
- Track upgrades needed
- Weight room expansion
- Space is limited
- Building in decent shape
- Football bleachers
- Cafeteria is small
- Signage on exterior
- Modularity removed – safety/security/bathroom/staffing concern

JEFFERSON CITY / CLANCY

- Dated, tired
- Office difficult to find
- Safety/security at entrance and throughout school
- Signage and orientation
- Modularity removed

BOULDER / BASIN

- Community believes facilities are aging and in need of upgrades
- Some community believes the facilities are well cared for
- Technology and computer distribution is adequate
- Remove modular
- Need new bleachers
- Improvements to interior are needed
- Front door is confusing, need new entry/signage
- Culinary Arts program
- Safety/security
- Parking lot improvements: lines, visitor spaces
- Small improvements add up (i.e. lockers, bleachers, etc.)
- Exterior concrete, sidewalks showing wear
- Make exterior inviting and welcoming
- Cafeteria/commons space
- Community spaces
- Library wing has residential furnace
- Building temperatures inconsistent
- Roof is piecemealed together

- Outdoor classroom space is well utilized and nice
- Need outdoor landscaping (possibly completed by students as outdoor classroom project)
- Atmosphere has improved at school
- Pride in atmosphere
- Sell the school better
- Signage to find library

QUESTION 5: 200+ STUDENTS CHOOSE TO GO TO HELENA HIGH OVER JEFFERSON HIGH SCHOOL EACH YEAR. WHAT FACTORS DO YOU BELIEVE INFLUENCE THEIR DECISION TO ATTEND HIGH SCHOOL OUT OF DISTRICT? HOW CAN JEFFERSON HIGH SCHOOL CAPTURE MORE IN-DISTRICT STUDENTS?

MONTANA CITY

- Sports
- Distance
- Advanced courses
- More knowledge of Helena offerings (school, community, friends, radio, social media, paper, etc.)
- Perception of JHS
- No guarantee that north-end students will be captured
- Discuss redrawing Districts
- 4-day week works well for many
- Parents know all kids in school
- Weather rarely influences school closure
- Boulder Hill well maintained
- Bus is scary to many parents that have not experienced it
- Highway Patrol statistics cite more accidents between Montana City and Helena than between Montana City and Boulder
- Perception of Boulder Bill
- Unfamiliar with Boulder
- JHS alerts parents of closures, late start/early out via text system
- Carpooling works well

JEFFERSON CITY / CLANCY

- Understand students leaving
- Optimal school size is Class A – what would new school be?
- Keep ability to do 2 sports at once
- Class would determine length of sports trips-

currently not an issue

- Interview students/families going out-of-district, plus incoming graes
- Take care of students at JHS before trying to understand those leaving
- Attitude of geography
- Offer open house to incoming parents
- Lack of outreach re: dual-credit, etc.
- Current lack of understanding
- Minimal cost to taxpayers to attend out-of-district
- Convenience of attending out-of-district
- Money and land is needed
- What is students' wish – do they follow cohort, or is it largely parent decision
- Helena is more attractive
- Community is where it is created
- Boulder has appeal with community, events, preference
- Not comfortable with doubling size of school
- Many students thrive in smaller environment
- SpEd lacking
- Having choice of schools is beneficial

BOULDER / BASIN

- Convenience for parents with jobs in Helena
- Educational outcomes was #1 at MT City (per survey) VERIFY
- Perception of JHS
- Educating/marketing communities on school's offerings, opportunities
- Helena residents moving to Northern Jefferson County and continue to identify as Helena residents
- Ask students/families with students going out-of-district
- 4-day school week is positive
- Montana City/Clancy/Jefferson City Schools' staff perception of JHS
- Students follow friends
- Programs to acquire students earlier
- How can enrollment become more predictable?
- Expand band/theater program to recruit students
- Show accomplishments of students at Jr. High level

QUESTION 6: WITH THE MONTANA DEPARTMENT OF COMMERCE CENSUS & ECONOMIC INFORMATION CENTER PROJECTING JEFFERSON COUNTY'S POPULATION TO GROW BY 59.2% BY 2030, DO YOU BELIEVE THAT JEFFERSON HIGH SCHOOL IS IN NEED OF EXPANDING ITS FACILITIES TO MEET CURRENT GROWTH PROJECTIONS?

MONTANA CITY

- Depends on location of projected growth
- A few subdivisions available in Boulder
- Census doesn't take into account developable land, zoning, etc.
- Students may go to EHHS
- Sports facility in Clancy/Jefferson City
- Not realistic to expect majority of student population to travel
- JHS opportunities sound good
- Students spend time with Helena residents more
- Convenience of amenities in Helena
- Logistically more challenging to go to JHS
- Cost to upgrade vs. cost to existing
- Sports facilities for competitions, tournaments
- Come to taxpayers with solution to enhance opportunities
- Prefer small town setting
- Parents support bond/levies, elderly more hesitant

JEFFERSON CITY / CLANCY

- Some do not believe projections and caution against using census data
- Consider student population to Kindergarten
- How did largest class size at JHS operate?
- Montana City owns land, not available to JHS

BOULDER / BASIN

- Demographic projections are unreliable
- Need breakdown on age, family units, elderly
- Discouraging to see new schools elsewhere
- Modify current school
- Make learning environment more conducive to different learning styles
- Possible expansion
- Improvements may attract teachers

- Expansion needed without changes in other Districts to accommodate current programs
- Technology needs are up to speed

GENERAL QUESTIONS:

- Where would North Campus go? Is there space, sewage?
- Wait and see what East Helena High School does
- Process makes public aware of school and builds community
- Discussion of survey timeline and resulting report
- Transportation Survey
- Feasibility not included in report

